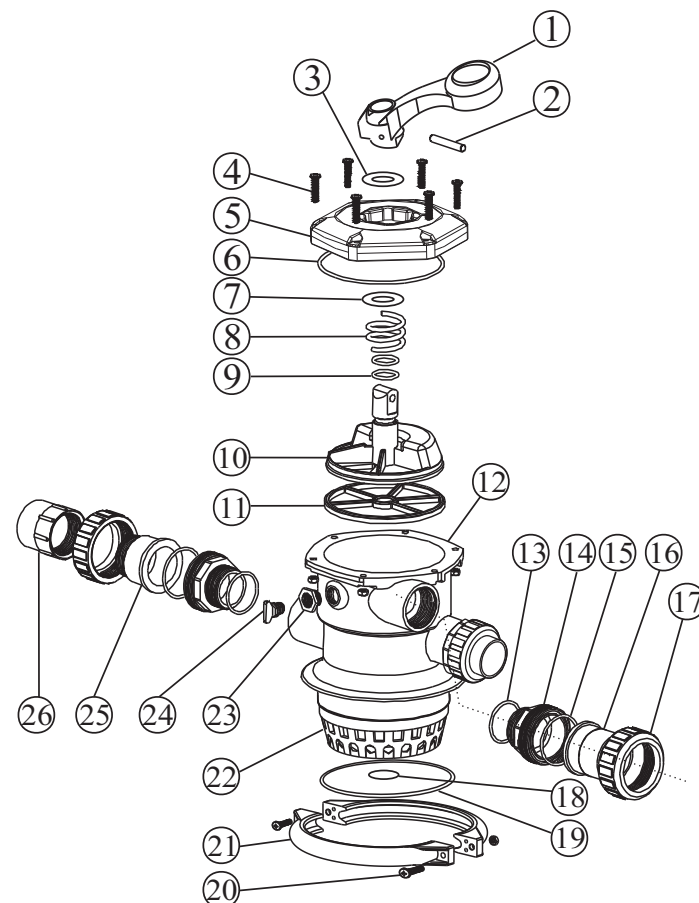


REPLACEMENT PARTS OF 1.5" MULTIPORT VALVE

Item	Part No.	Description
1	8110B	Handle
2	8211	Lock Pin
3	8112	Washer
4	8113 8125	Screw Nut hex
5	8114AB	Cover
6	8118	O'ring of cover
7	8115	Washer
8	8116	Spring
9	8117	O'ring
10	8119	Divertor head
11	8120	Gasket
12	8121B	Body
13	8123	O'ring
14	8136B	Threaded tail piece
15	8129	O'ring
16	8128B	Union head
17	8127B	Union nut
18	8126	O'ring
19	8101	O'ring
20	8102	Screw
21	8103B	Flange clamp
22	8123	Overdrain,diffuser
23	8165	Insert
24	8124	Pressure gauge gilt
25	8122	Sight glass
26	3649B	Tricky set



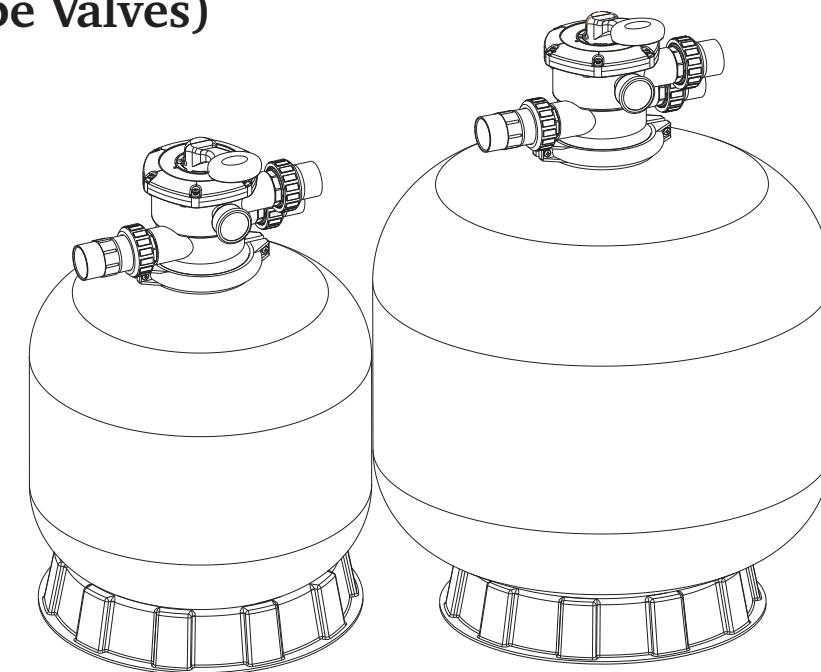
Valve Position	Function
FILTER	Normal Filtration and Vacuuming
BACKWASH	Cleaning Filter by reversing the flow
RINSE	Used after backwash to flush dirt from valve
WASTE	By-passes filter, used for vacuuming to waste or lowering water level
RECIRCULATE	By-passes filter for circulating water to pool
CLOSED	Shuts off all flow to filter or pool

WARNING

- ⚠ THIS FILTER OPERATES UNDER HIGH PRESSURE. WHEN ANY PART OF THE CIRCULATING SYSTEM (e.g., CLAMP, PUMP, FILTER, VALVES, ETC.) IS SERVICED, AIR CAN ENTER THE SYSTEM AND BECOME PRESSURIZED. PRESSURIZED AIR CAN CAUSE THE LID OR VALVE TO BE BLOWN OFF WHICH CAN RESULT IN SEVERE INJURY, DEATH, OR PROPERTY DAMAGE
- ⚠ TURN PUMP OFF BEFORE CHANGING VALVE POSITION.
- ⚠ TO PREVENT DAMAGE TO THE PUMP AND FOR PROPER OPERATION OF THE SYSTEM, CLEAN PUMP STRAINER AND SKIMMER BASKETS REGULARLY.
- ⚠ DO NOT UNSCREW SCREWS OF FLANGE CLAMP WHILE PUMP IS RUNNING.

FILTRON SERIES V SAND FILTER

Models:FT35,FT45,FT55,FT80,FT110
(Link by Clamp type Valves)



FUNCTION

The filter uses special filter sand to remove dirt particles from pool water. The filter sand is loaded into the filter tank and functions as the permanent dirt removing media. When the control valve is in the FILTER position, the pool water which contains suspended dirt particles, is pumped through your piping system and is automatically directed by the patented filter control valve to the top of the filter tank. As the pool water is pumped through the filter, dirt particles are trapped by the sand bed, and filtered out. The cleaned Pool water is returned from the bottom of the filter tank, through the control valve and back to the pool through the piping system. This entire sequence is continuous and automatic and provides for total recirculation of pool water through your filter and piping System.

After a period of time the accumulated dirt in the filter causes a resistance to flow, and the flow diminishes. This means it is time to clean your filter. With the control valve in the BACKWASH position, the water flow is automatically reversed through the filter so that it is directed to the bottom of the tank, up through the sand, flushing the previously trapped dirt and debris out the waste line. Once the filter is back-washed of dirt, set control valve to RINSE position and run pump for about 1/2 to 1 minute, and then to filter, to resume normal filtering.

NOTE: Turn pump off before changing valve position.

INSTALLATION

Only simple tools (screwdriver and wrenches), plus pipe sealant for plastic adapters, are required to install and service the filter.

- The filter should be placed on a level concrete slab, very firm ground, or equivalent. Position the filter so that the piping connections, control valve are convenient and accessible for operation and service.
- Loading the sand media. Filter sand media is loaded through the top opening of the filter.
 - Loosen flange clamp and remove filter control valve (if previously installed).
 - Cap internal pipe with plastic cap to prevent sand from entering it.
 - We recommend filling tank approximately 1/2 way with water to provide a cushion effect when the filter sand is poured in. This helps protect the under-drain laterals from excessive shock.
 - Ensure internal pipe stem remains centered in opening and covered with sand distribution cover. Carefully pour in correct amount and grade of filter media. Remove distribution cover when completed and reconnect multiport valve.

3. Assemble filter control valve to filter tank.

- Insert filter control valve (with O'ring in place) into the tank neck, taking care that the center pipe slips into the hole in the bottom of the valve.
- Place two plastic clamps around valve flange and tank flange and tighten just enough so that the valve may be rotated on tank for final positioning.
- Carefully screw pressure gauge (with O'ring in place) into tapped hole in valve body. Do not over-tighten.

IMPORTANT! Nipple must be pierced for correct operation of gauge. Ensure gauge is mounted with nipple at TOP. Failure to comply will VOID WARRANTY.

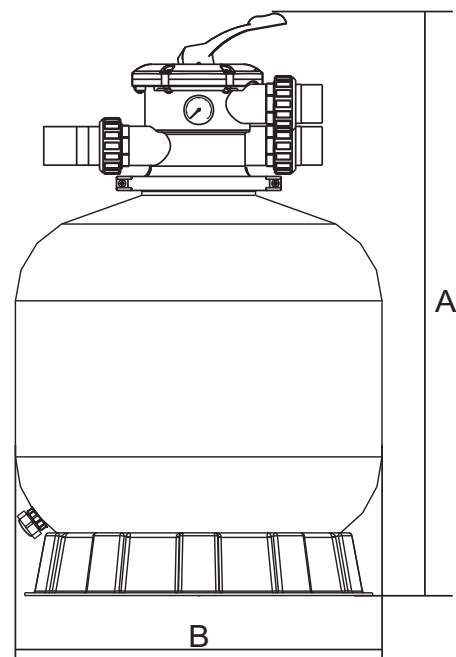
- Connect pump to control valve opening marked PUMP. After connections are made, tighten valve flange clamps with screwdriver, tapping around clamp with screwdriver handle to help seat valve flange clamp.

4. Make return to pool pipe connection to control valve opening marked RETURN and complete other necessary plumbing connections, suction lines to pump, waste, etc.

5. Make electrical connections to pump per pump instructions.

6. To prevent water leakage, be sure all pipe connections are tight.

MAIN DIMENSION



DIMENSION TABLE

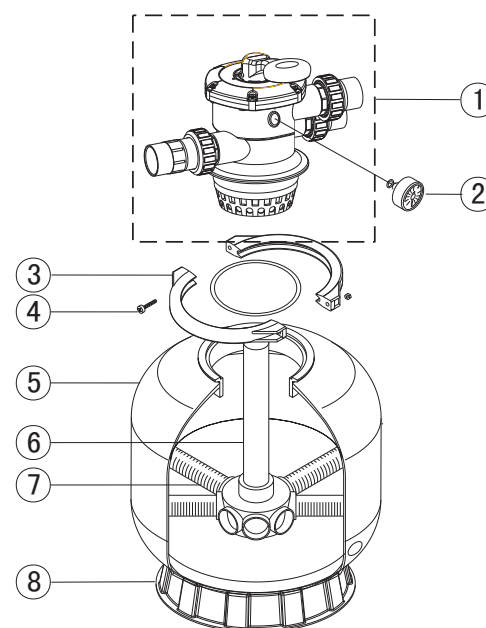
Model	High mm A	Diameter mm B	Valve Port Size inch	Sand kg
FT35	757	400	1.5"	40
FT45	817	450	1.5"	60
FT55	845	533	1.5"	90
FT80	950	635	1.5"	160
FT110	1020	710	1.5"	200

INSTALL/START-UP OF FILTER

- Be sure correct amount of filter media sand is in tank and that all connections have been made and are secure.
- With pump off depress control valve handle and rotate to BACKWASH position. (To prevent damage to control valve seal, always depress handle before turning.)
- Prime and start pump according to pump instructions (be sure all suction and return lines are open), allowing the filter tank to fill with water. Once water is flowing out of the waste line, run the pump for at least 1 minute. The initial back-washing of the filter is recommended to remove any impurities or fine sand particles in the sand media.
- Turn pump off and set valve to RINSE position. Start pump and operate until water in sight glass is clear, about 1/2 to 1 minute. Turn pump off and set valve to FILTER position and restart pump. The filter is now operating in the normal filter mode, filtering dirt particles from the pool water.
- Adjust pool suction and return valves to achieve desired flow. Check system and filter for water leaks and tighten connections, bolts, nuts, as required.
- Note the initial pressure gauge reading when the filter is clean. (It will vary from pool to pool depending upon the pump and general piping system.) As the filter removes dirt and impurities from the pool water, the accumulation in the filter will cause the pressure to rise and flow to diminish. When the pressure gauge reading is 1.5 bar, higher than the initial "clean" pressure you noted, it is time to backwash the filter (see BACKWASH under filter and control valve functions).

NOTE: During initial clean-up of the pool water it may be necessary to backwash frequently due to the unusually heavy initial dirt load in the water.

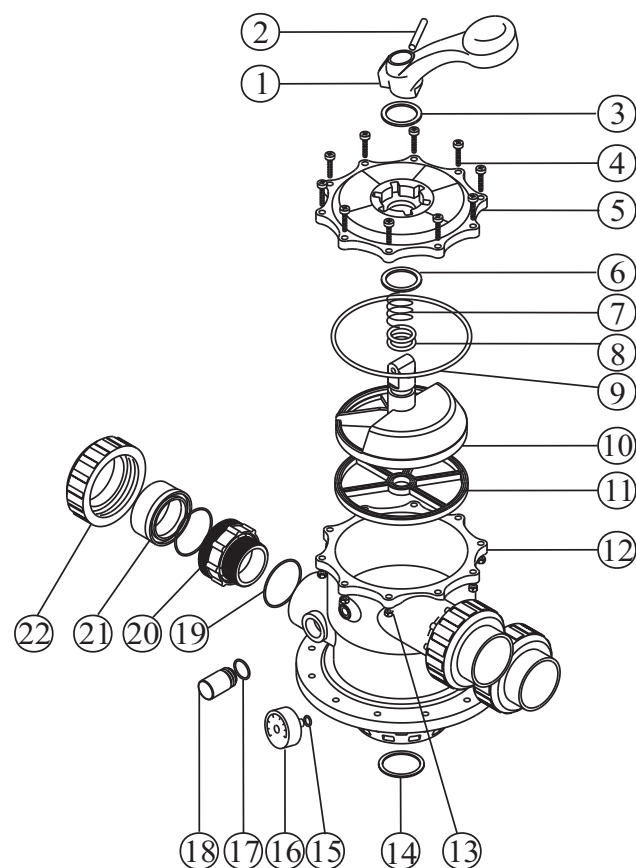
REPLACEMENT PARTS OF FILTER



Item	Part No.	Description
1	8100B	Valve
2	8151	Pressure gauge
3	8103B	Flange clamp
4	8102	Screw
5	FT35	Filter tank 16"
	FT45	Filter tank 18"
	FT55	Filter tank 21"
	FT80	Filter tank 24"
	FT110	Filter tank 28"
6	PECENT16 PECENT18	Lateral assembly with center pipe 16"-18"
	PECENT21 PECENT24 PECENT28	Lateral assembly with center pipe 21"-28"
7	PELAT	Lateral 16"-28"
8	8107	Filter support stand

REPLACEMENT PARTS OF MULTIPORT VALVE

Item	Part No.	Description
1	8210	Handle
2	8211	Lock pin
3	8212	Washer
4	8213	Screw
5	8214	Cover
6	8215	Washer
7	8216	Spring
8	8217	O'ring
9	8218	O'ring of cover
10	8219	Divertor head
11	8220	Gasket
12	8221	Body
13	8225	Nut Hex
14	8226	O'ring
15	8150	Pressure gauge
16	8224	Gasket of pressure gauge
17	8227	O'ring for sight glass
18	8222	Sight glass
19	8231	O'ring
20	8230	Threaded tail piece
21	8229	Union head
22	8228	Union nut



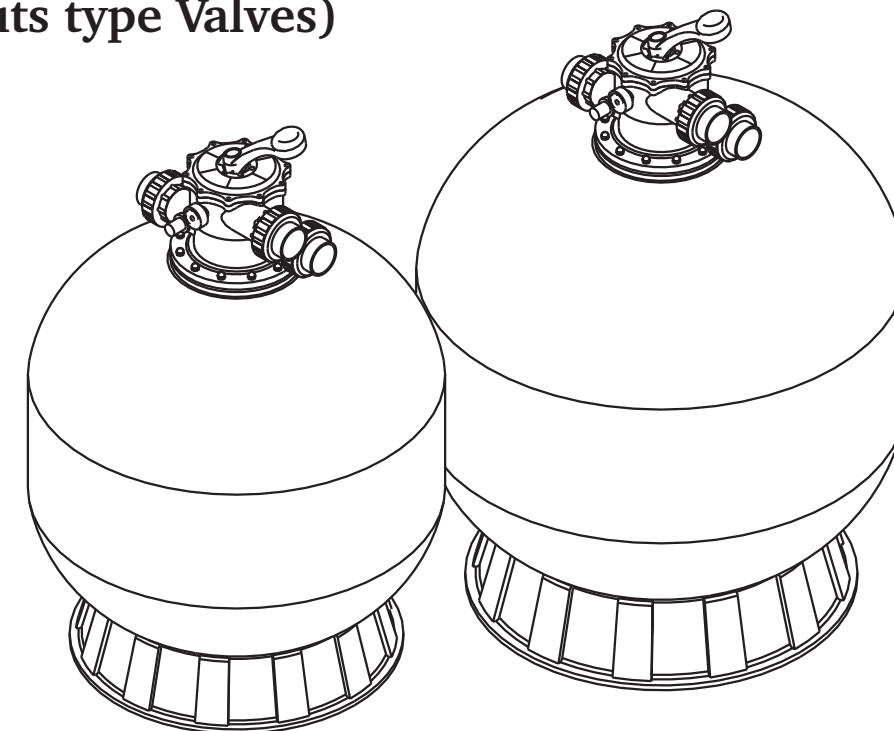
Valve Position	Function
FILTER	Normal Filtration and Vacuuming
BACKWASH	Cleaning Filter by reversing the flow
RINSE	Used after backwash to flush dirt from valve
WASTE	By-passes filter, used for vacuuming to waste or lowering water level
RECIRCULATE	By-passes filter for circulating water to pool
CLOSED	Shuts off all flow to filter or pool

WARNING

- ⚠ THIS FILTER OPERATES UNDER HIGH PRESSURE. WHEN ANY PART OF THE CIRCULATING SYSTEM (e.g., CLAMP, PUMP, FILTER, VALVES, ETC.) IS SERVICED, AIR CAN ENTER THE SYSTEM AND BECOME PRESSURIZED. PRESSURIZED AIR CAN CAUSE THE LID OR VALVE TO BE BLOWN OFF WHICH CAN RESULT IN SEVERE INJURY, DEATH, OR PROPERTY DAMAGE
- ⚠ TURN PUMP OFF BEFORE CHANGING VALVE POSITION.
- ⚠ TO PREVENT DAMAGE TO THE PUMP AND FOR PROPER OPERATION OF THE SYSTEM, CLEAN PUMP STRAINER AND SKIMMER BASKETS REGULARLY.

E-3-2000-WF

Models: FT110, FT130, FT180, FT225, FT260, FT340 (Link by Nuts type Valves)



FUNCTION

The filter uses special filter sand to remove dirt particles from pool water. The filter sand is loaded into the filter tank and functions as the permanent dirt removing media. When the control valve is in the FILTER position, the pool water which contains suspended dirt particles, is pumped through your piping system and is automatically directed by the patented filter control valve to the top of the filter tank. As the pool water is pumped through the filter, dirt particles are trapped by the sand bed, and filtered out. The cleaned Pool water is returned from the bottom of the filter tank, through the control valve and back to the pool through the piping system. This entire sequence is continuous and automatic and provides for total recirculation of pool water through your filter and piping System.

After a period of time the accumulated dirt in the filter causes a resistance to flow, and the flow diminishes. This means it is time to clean your filter. With the control valve in the BACKWASH position, the water flow is automatically reversed through the filter so that it is directed to the bottom of the tank, up through the sand, flushing the previously trapped dirt and debris out the waste line. Once the filter is back-washed of dirt, set control valve to RINSE position and run pump for about 1/2 to 1 minute, and then to filter, to resume normal filtering.

NOTE: Turn pump off before changing valve position.

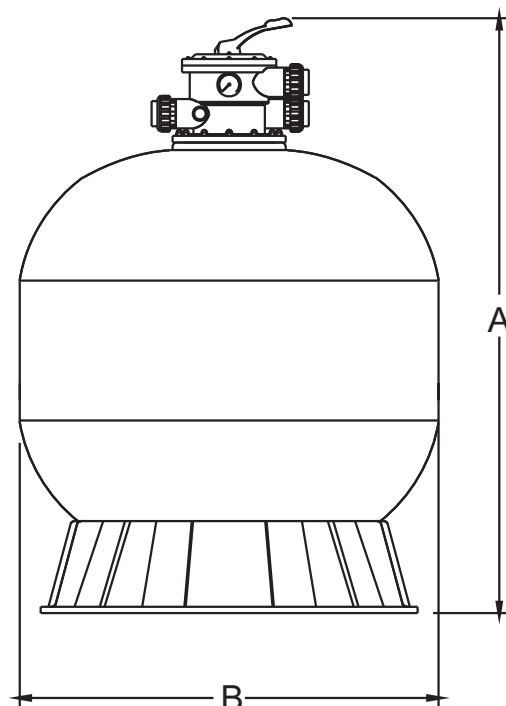
INSTALLATION

Only simple tools (screwdriver and wrenches), plus pipe sealant for plastic adapters, are required to install and service the filter.

- The filter should be placed on a level concrete slab, very firm ground, or equivalent. Position the filter so that the piping connections, control valve are convenient and accessible for operation and service.
- Loading the sand media. Filter sand media is loaded through the top opening of the filter.
 - Loosen flange clamp and remove filter control valve (if previously installed).
 - Cap internal pipe with plastic cap to prevent sand from entering it.
 - We recommend filling tank approximately 1/2 way with water to provide a cushion effect when the filter sand is poured in. This helps protect the under-drain laterals from excessive shock.
 - Ensure internal pipe stem remains centered in opening and covered with sand distribution cover. Carefully pour in correct amount and grade of filter media. Remove distribution cover when completed and reconnect multiport valve.

3. Assemble filter control valve to filter tank.
 - a. Insert filter control valve (with O'ring in place) into the tank neck, ensuring the twelve bolts which is pre-embedded in the tack through the twelve hole round the valve,taking care that the center pipe slips into the hole in the bottom of the valve as well.
 - b. Put the twelve nuts and washers onto each of the twelve bolts,then screw all the nuts on with wrench, ensuring that all nuts are tight.
 - c. Carefully screw pressure gauge (with O'ring in place) into tapped hole in valve body. Do not over-tighten. **IMPORTANT!** Nipple must be pierced for correct operation of gauge. Ensure gauge is mounted with nipple at TOP. Failure to comply will VOID WARRANTY.
 - d. Connect pump to control valve opening marked PUMP.
4. Make return to pool pipe connection to control valve opening marked RETURN and complete other necessary plumbing connections, suction lines to pump, waste, etc.
5. Make electrical connections to pump per pump instructions.
6. To prevent water leakage, be sure all pipe connections are tight.

MAIN DIMENSION



DIMENSION TABLE

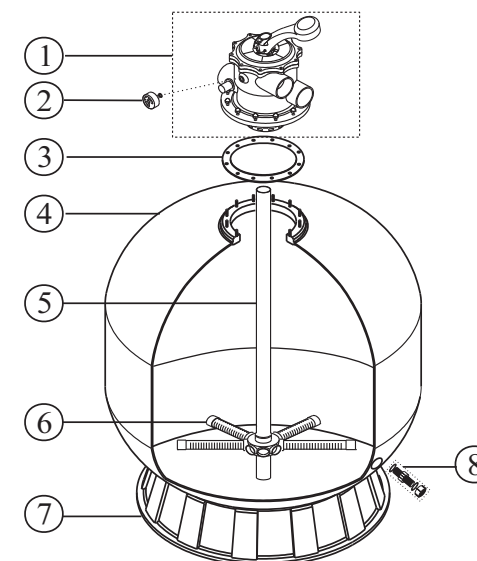
Model	High mm A	Diameter mm B	Valve inch	Sand kg
FT110	1025	710	2"	180
FT130	1200	800	2"	200
FT180	1300	900	2"	300
FT225	1400	1000	2"	400
FT260	1480	1120	2"	450
FT340	1600	1200	2"	550

INSTALL/START-UP OF FILTER

1. Be sure correct amount of filter media sand is in tank and that all connections have been made and are secure.
2. Depress control valve handle and rotate to BACKWASH position. (To prevent damage to control valve seal, always depress handle before turning.)
3. Prime and start pump according to pump instructions (be sure all suction and return lines are open), allowing the filter tank to fill with water. Once water is flowing out of the waste line, run the pump for at least 1 minute. The initial back-washing of the filter is recommended to remove any impurities or fine sand particles in the sand media.
4. Turn pump off and set valve to RINSE position. Start pump and operate until water in sight glass is clear, about 1/2 to 1 minute. Turn pump off and set valve to FILTER position and restart pump. The filter is now operating in the normal filter mode, filtering dirt particles from the pool water.
5. Adjust pool suction and return valves to achieve desired flow. Check system and filter for water leaks and tighten connections, bolts, nuts, as required.
6. Note the initial pressure gauge reading when the filter is clean. (It will vary from pool to pool depending upon the pump and general piping system.) As the filter removes dirt and impurities from the pool water, the accumulation in the filter will cause the pressure to rise and flow to diminish. When the pressure gauge reading is 1.5 bar, higher than the initial "clean" pressure you noted, it is time to backwash the filter (see BACKWASH under filter and control valve functions).

NOTE: During initial clean-up of the pool water it may be necessary to backwash frequently due to the unusually heavy initial dirt load in the water.

REPLACEMENT PARTS OF FILTER



Item	Part No.	Description
1	8200	50mm Valve
2	8150	Pressure gauge
3	8201	Gasket of flange
4	8249	Filter tank 28" with 50mm valve
	8250	Filter tank 32"
	8251	Filter tank 36"
	8252	Filter tank 40"
	8253	Filter tank 48"
5	8260	Lateral assembly with center pipe 32"
	8261	Lateral assembly with center pipe 36"
	8262	Lateral assembly with center pipe 40"
	8263	Lateral assembly with center pipe 48"
6	8204	Lateral
7	8205	Filter support stand
8	8309	Under Drain